

Installation des Programms garmin express

Es handelt sich um ein Programm, das unter windows läuft. Laut einer google-Recherche sollte es nach folgender Anleitung auch unter ubuntu 20.04 installierbar sein.

Ergebnis meines Installationsversuches:

Schritt 1 und 2 habe problemlos funktioniert, Schritt 3 hat kein Ergebnis geliefert.

Installation Steps

First we start by creating a wineprefix and installing our prerequisites from terminal:

- 1

```
WINEARCH=win32 WINEPREFIX=/home/$USER/GarminExpress winetricks dotnet452 vcrun2010 corefonts  
WINEARCH=win32 WINEPREFIX=/home/$USER/GarminExpress winetricks win7
```

Note: You will be prompted during the setup for .NET installation just hit next and finish. Also, I like to separate win7 after the prerequisites are setup to make sure the wineprefix runs in Windows 7 mode.

- 2 With that out of the way we need to download and install our GarminExpress.exe Setup executable. I downloaded mine from <https://www.garmin.com/en-US/software/express>

Run the GarminExpress.exe file in our wine prefix

- 3

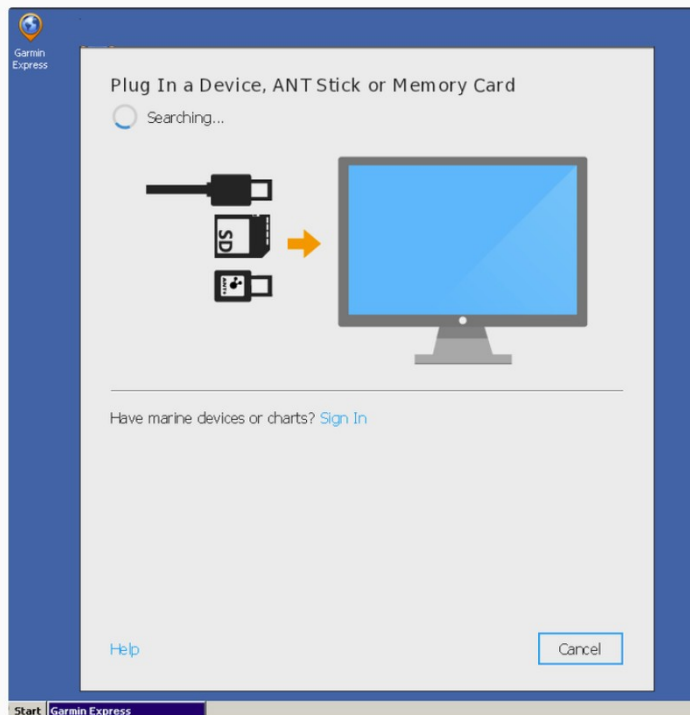
```
WINEPREFIX=/home/$USER/GarminExpress wine explorer /desktop=garmin,1366x768  
/home/$USER/Downloads/GarminExpress.exe
```

Note: If you downloaded the GarminExpress.exe to another location replace it above

Modify your shortcut to be the following command

```
WINEPREFIX=/home/ctitus/GarminExpress wine explorer /desktop=garmin,1366x768  
/home/ctitus/GarminExpress/drive_c/Program Files/Garmin/Express/express.exe'
```

Upon Launch you should see this screen which should recognize your Garmin device



With all this done you will be able to launch Garmin Express on Linux.